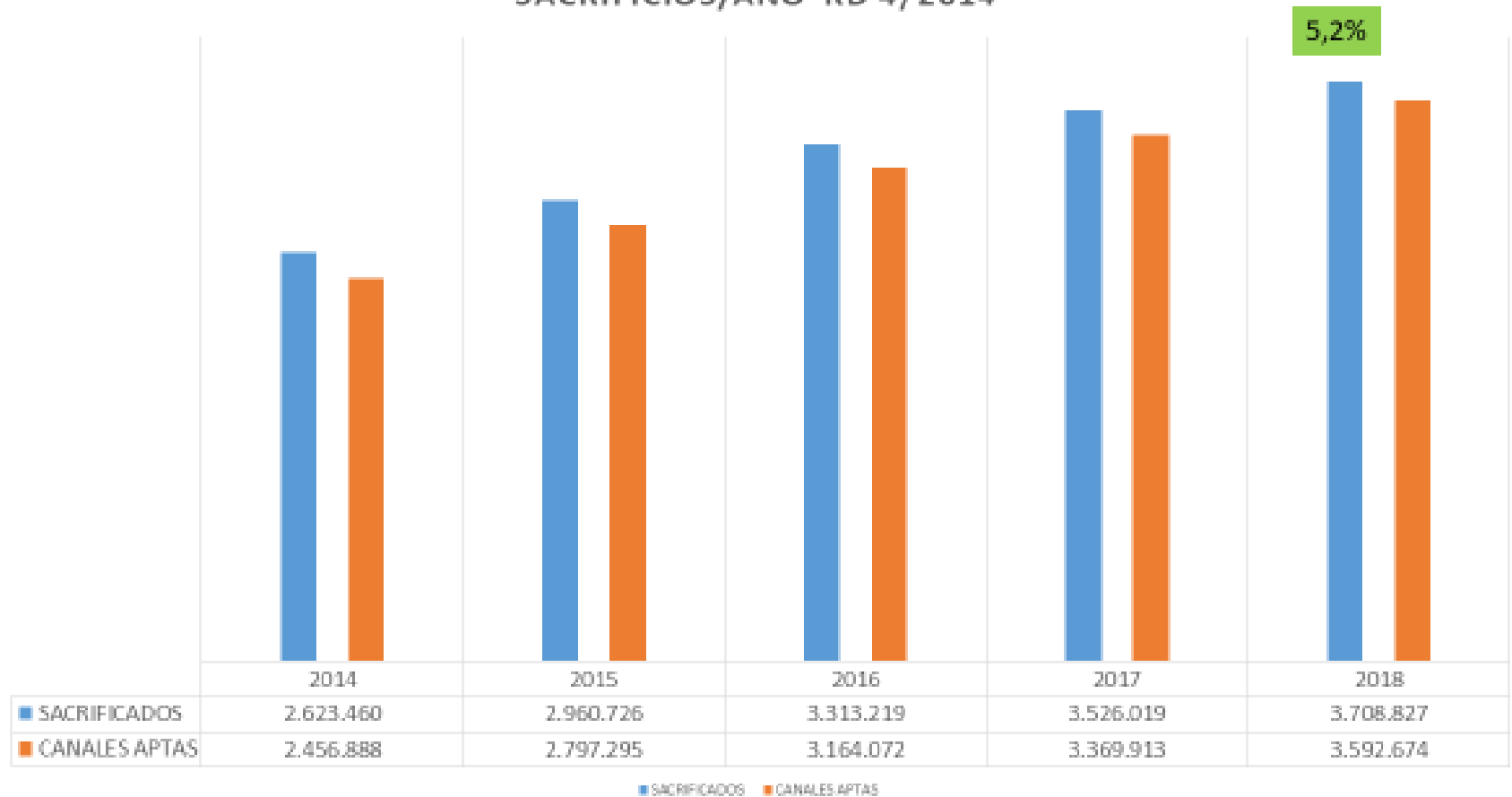




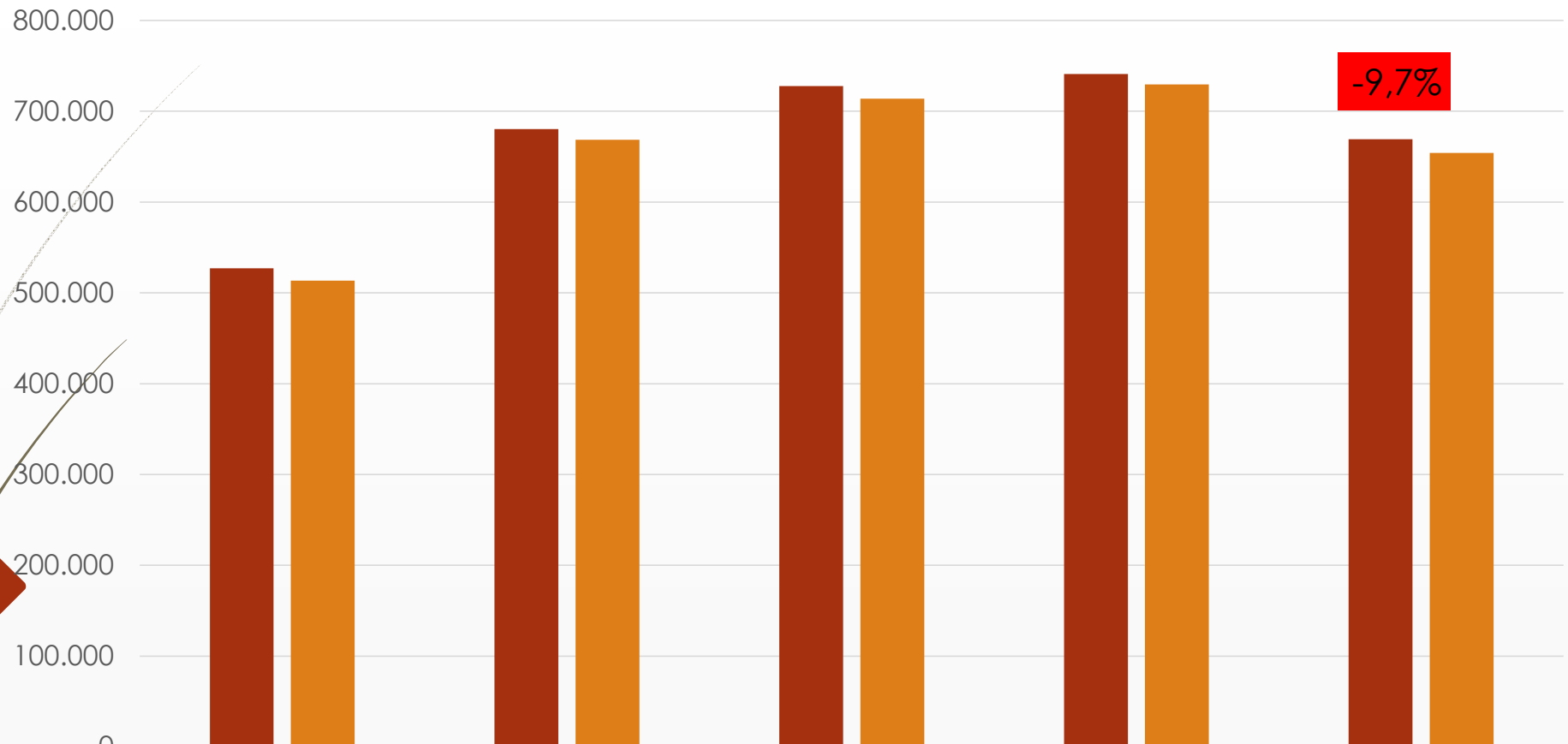
INFORMACIÓN DE ITACA

Marzo de 2019

SACRIFICIOS/AÑO RD 4/2014

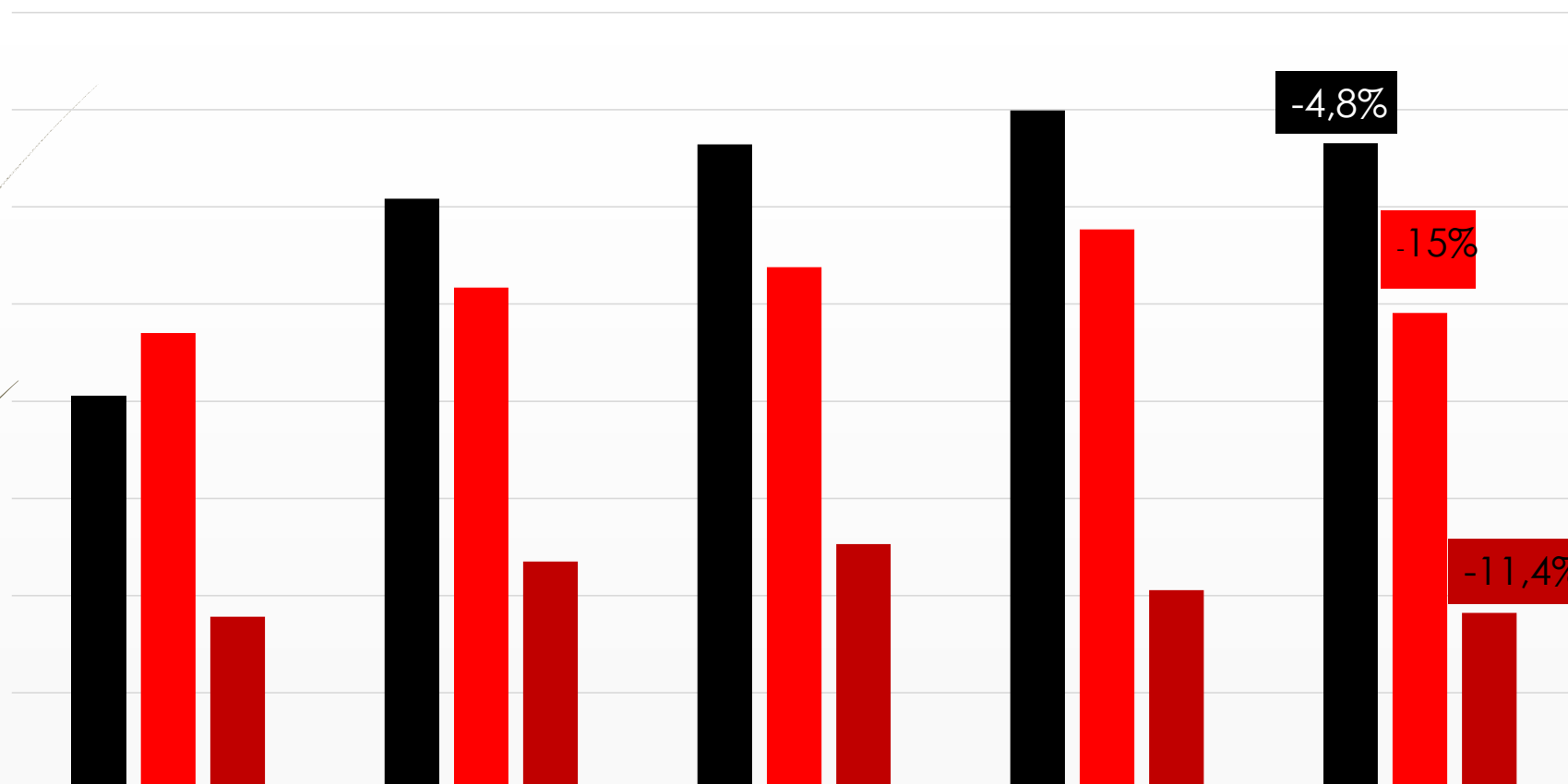


SACRIFICIOS MONTANERAS 2014-2015 A 2018-2019



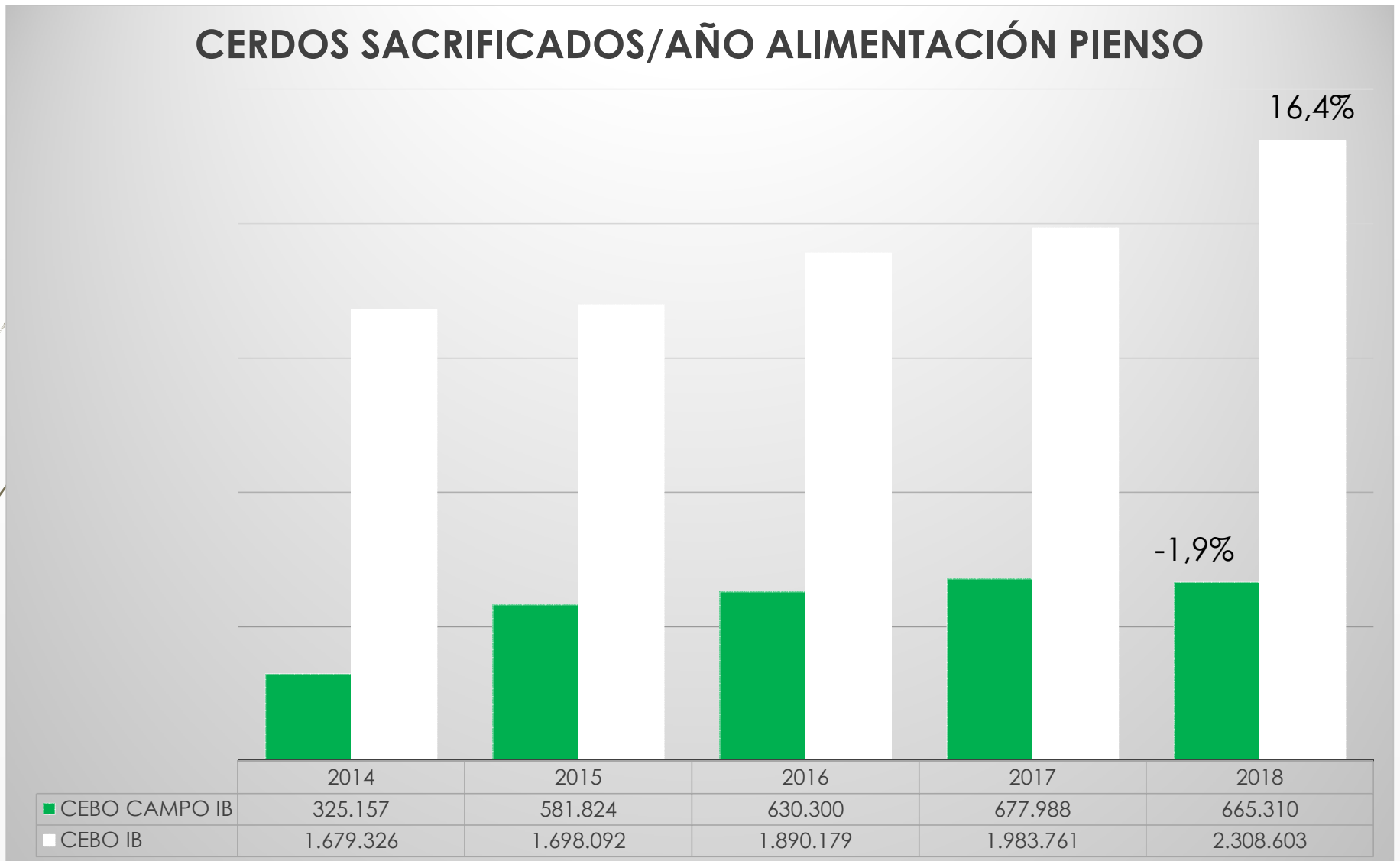
	2014	2015	2016	2017	2018* (25/03/2019)
■ SACRIFICADOS	527.315	680.408	727.986	741.132	669.480
■ CANALES APTAS	513.709	668.885	713.894	729.573	654.388

SACRIFICIOS BELLOTA POR TIPO GENÉTICO MONTANERAS 2014-2015 A 2018-2019

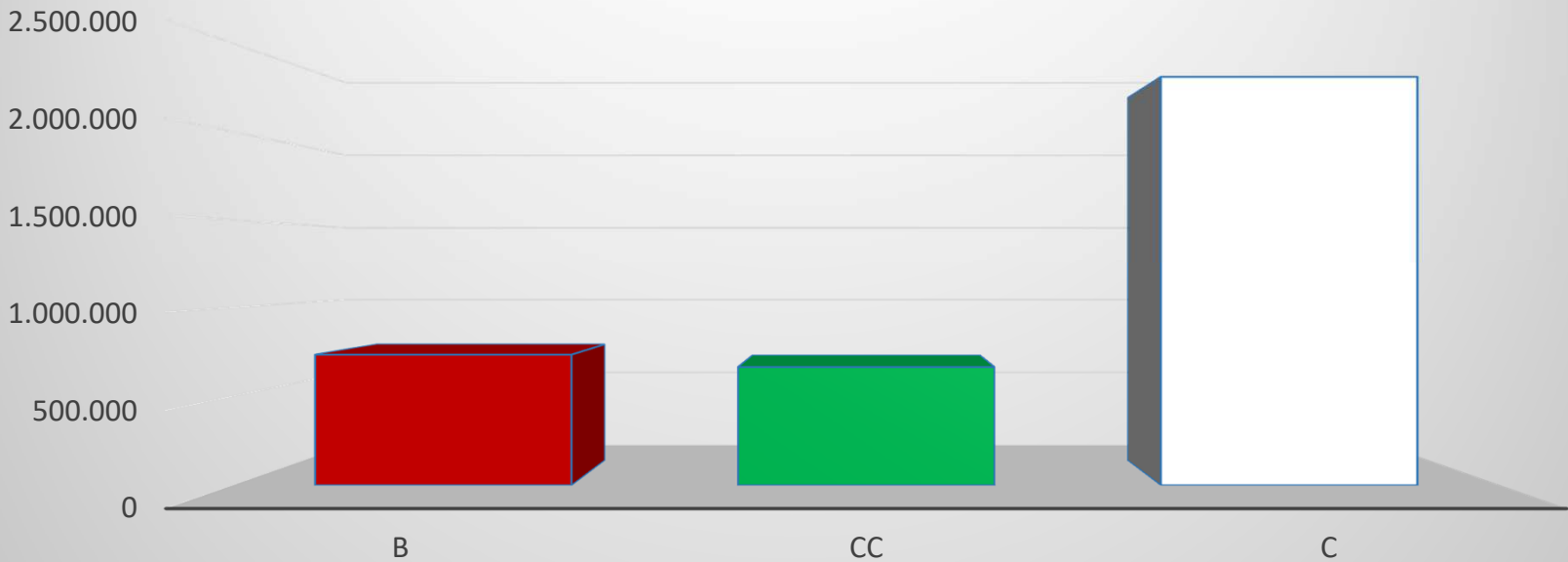


	2014	2015	2016	2017	2018
■ BELLOTA 100% Ib	203.054	304.274	332.349	349.716	332.897
■ BELLOTA 50% Ib	235.188	258.541	269.090	288.592	245.440
■ BELLOTA 75% Ib	89.073	117.593	126.547	102.824	91.143

CERDOS SACRIFICADOS/AÑO ALIMENTACIÓN PIENSO



AÑO 2018 UNIDADES SACRIFICADAS POR ALIMENTACIÓN



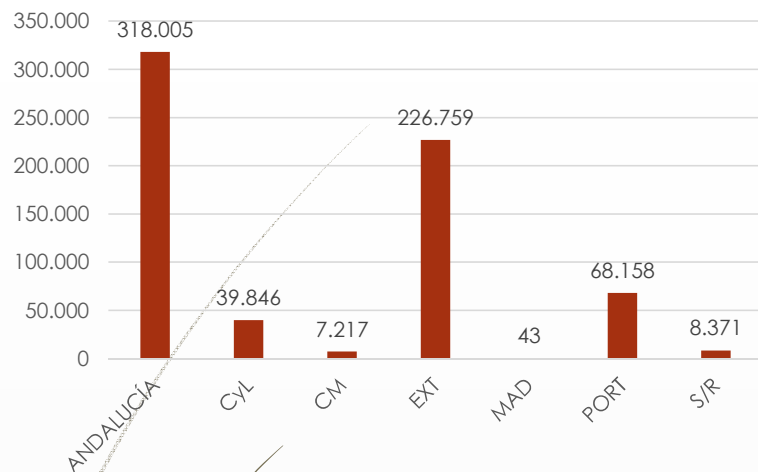
	B	CC	C
U SAC	734.914	665.310	2.308.603

SACRIFICIOS BELLOTA 2018-2019

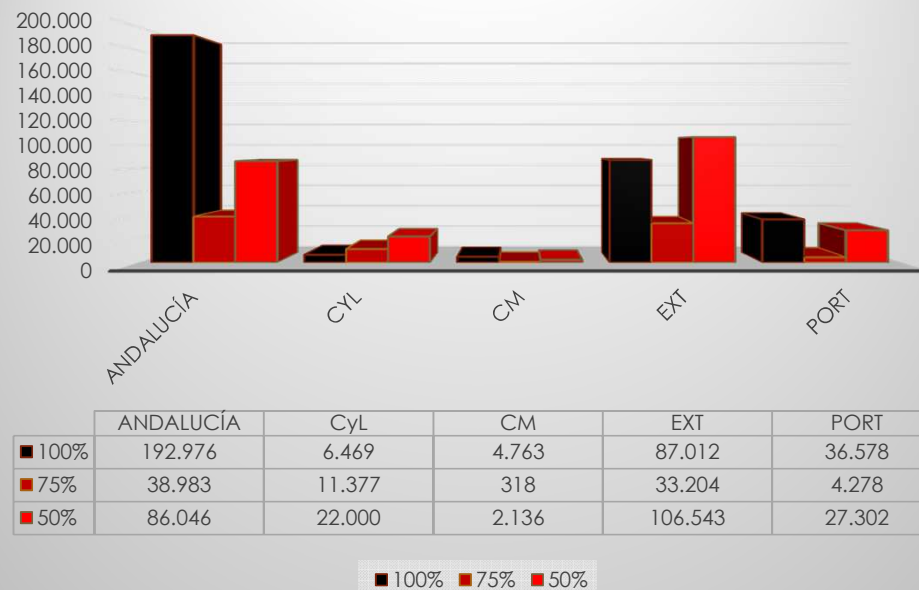
COMUNIDAD AUTÓNOMA Y TIPOLOGÍA GENÉTICA

COMUNIDAD AUTÓNOMA	TOTAL	100%	75%	50%
ANDALUCÍA	318.005	192.976	38.983	86.046
CASTILLA y LEÓN	39846	6.469	11.377	22.000
CASTILLA LA MANCHA	7217	4.763	318	2.136
EXTREMADURA	226759	87.012	33.204	106.543
MADRID	43	43		
PORTUGAL	68158	36.578	4.278	27.302
S/R	8371	4.182	2.961	1.228

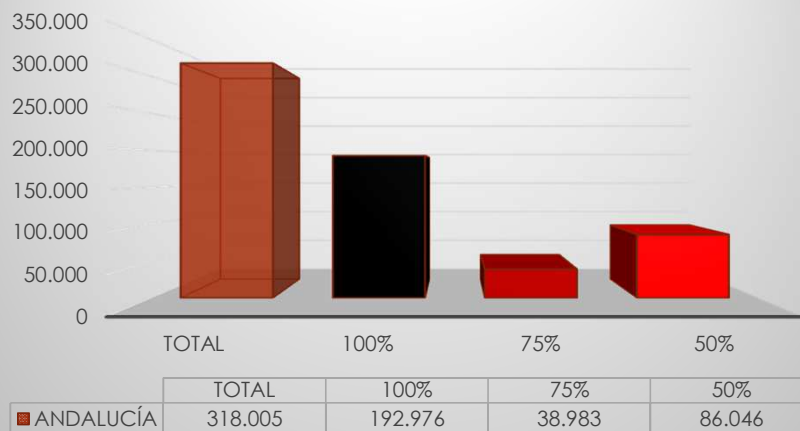
SACRIFICIOS BELLOTA 2018-2019



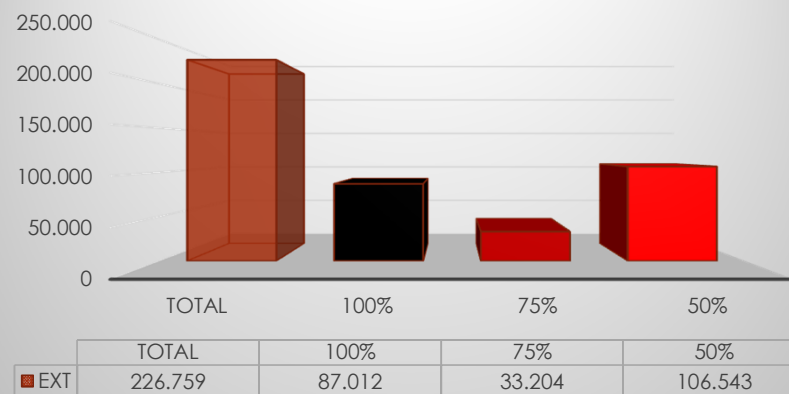
SAC B 2018-2019 C.A



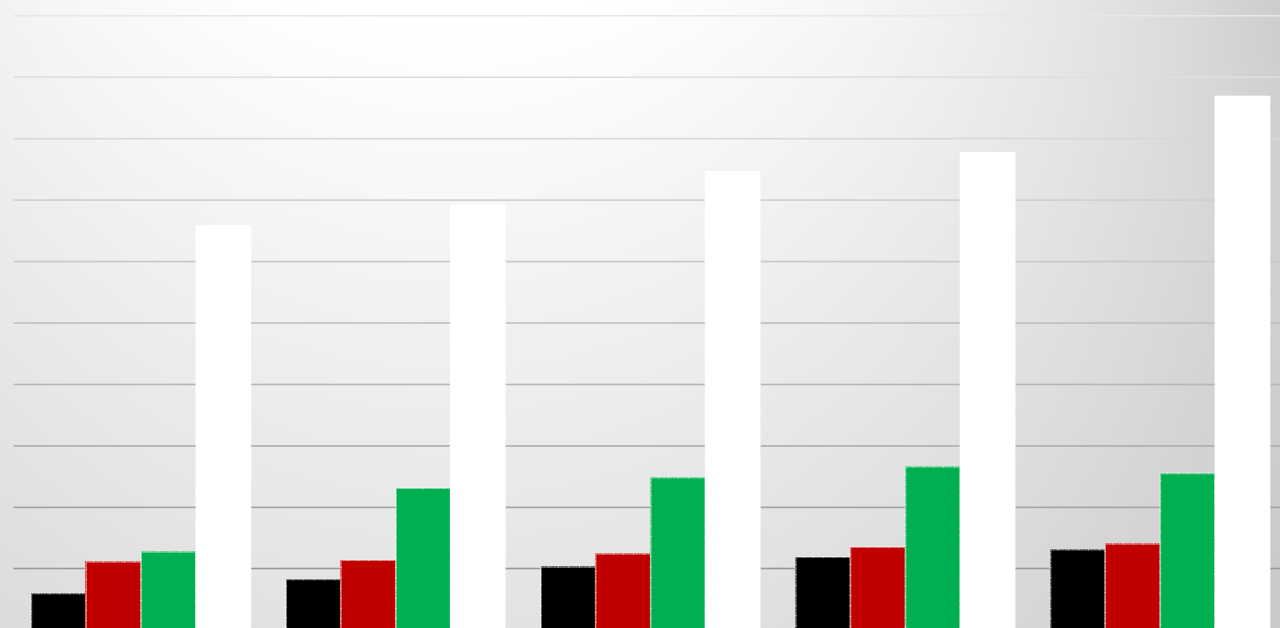
ANDALUCÍA SAC B 18-19



EXTREMADURA SAC B 18-19



PRECINTOS NORMA DE CALIDAD/AÑO, JAMONES



	2014	2015	2016	2017	2018
■ Bellota 100% Ibérico	296.227	412.678	513.734	594.868	653.156
■ Bellota Ibérico	553.954	567.145	621.485	675.345	700.030
■ Cebo Campo Ibérico	634.790	1.155.473	1.241.492	1.327.547	1.274.980
■ Cebo Ibérico	3.289.383	3.456.442	3.728.388	3.882.559	4.345.637